



Leadership Spokane Community Service Project

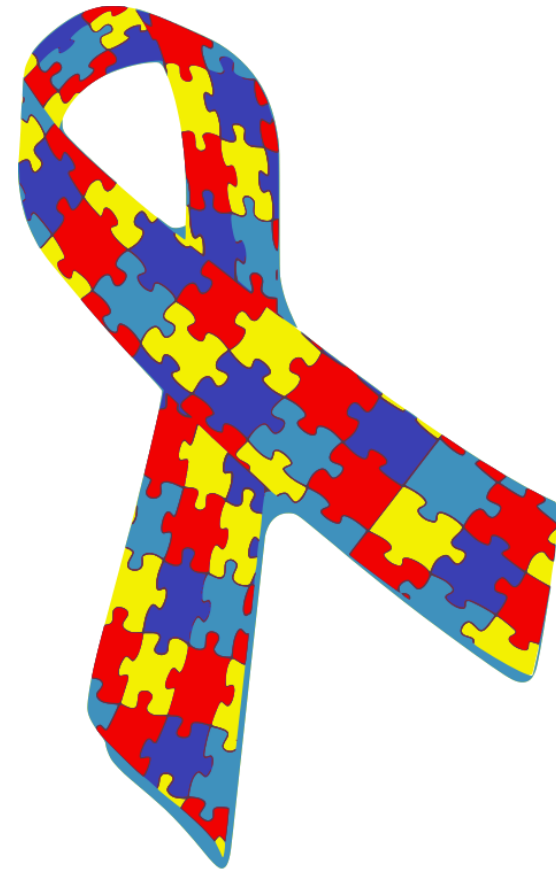
Amanda Cross, Meghan Lunney, Jackson Morgan, John Nelson, Lacey Renner,
Erin Smith, Lorraine Tunca, Chris Wheatley, Erin Whitehead

Question 1

How many children in the US have been identified with Autism Spectrum Disorder (ASD)?

- A. 1 in 100
- B. 1 in 360
- C. 1 in 25
- D. 1 in 36

According to estimates from CDC's Autism and Developmental Disabilities Monitoring Network (ADDM).





<https://youtu.be/9gDmgpvxGZc>

Why NW Autism Center?

<https://www.nwautism.org/>

Question 2

How many families has NW Autism Center Served since 2003?

- A. 600
- B. 5000
- C. 1500
- D. 3400



What NW Autism Provides

- Day treatment clinic
- Community connections
- Community-based services
- Speech and language therapy
- Telehealth services
- Interprofessional education
- Education & training for schools and the community



**"Someone with Autism
has taught me love
needs no words."**

EVERYDAY **POWER**

The Project

- For Northwest Autism Center staff with limited capacity during the holidays
- Who want to ensure a happy holiday season for families in our community that are affected by autism
- A Leadership Spokane jolly cohort will provide an alternative for wrapping presents.
- Our product will free up capacity for skilled staff to assist families in need during the busy holiday season.
- The holiday gift wrapping project is a force multiplier that gives the gift of time to Northwest Autism Center staff.



4th Annual

Giving Tree

Benefiting adolescents and adults with developmental disabilities living in residential homes

www.HolidayGivingTree.org

Annual
Giving Tree
Gift
Wrapping





Our Process

- Our team went above the original scope of the project by each purchasing a gift from the Giving Tree for one of the clients
- Some of our favorite gift requests: 24 pack of Dr. Pepper and a bag of Cheetos
- Our team arrived at the Schade Brewery office location on Dec. 9, met staff, brought treats for the staff, and toured the facility
- We toured clinic rooms and learned about the day-to-day operations and needs of the community and center

Question 3

How many gifts did our team wrap for the giving tree?



Project Management & Teamwork

- Our task: wrap 300 gifts for children and adults living in group homes to free up time for NW Autism staff to focus on clients
- We used our project management and leadership training to devise the most efficient gift-wrapping methodology
- Given the tiny logistics of the room, range of present sizes, and abundance of amazing wrapping supplies, we broke up our larger team into 4 teams of 2
- One team member was the wrapper, the other managed tape and supplies
- We successfully wrapped 300 gifts in under 3 hours









8th Annual “Steps for Autism” Event

Another volunteer opportunity to serve
NW Autism Center

Question 4

What are the main purposes of the Steps for Autism Event?

- A. Meeting Annual Fundraising Goals
- B. Raising Awareness and Inclusivity
- C. Working off Doritos and 24 Pack of Dr. Pepper
- D. Support for Parents and Families
- E. Giving out Sneakers to Participants



+



2nd Volunteer Opportunity with Northwest Autism Center

- Lacey, Meghan, Chris, and Amanda volunteered for the 8th annual Steps for Autism event on Sunday, April 23rd to wrap-up Autism Awareness Month
- The greatest need for volunteers was as course monitors for the 5k walk to keep the 300 participants on course and encourage participants as “cheerleaders”
- Our team also volunteered as “popcorn slingers” at NW Autism’s booth prior to the walk









Steps for Autism Event

- All the participants seemed to enjoy themselves and appreciated being with the larger Autism community
- There were Marvel and Disney characters, Otto and Doris from the Spokane Indians, sensory friendly activities, and free ice cream
- The walk's primary objectives were to promote inclusion, and increase awareness

I am Beautiful, not
broken. Different,
not less. Challenged,
not challenging.
Overwhelmed, not
spoiled. Autism is
not a choice.
However,
acceptance is.



Biggest Take-Aways

NW Autism Center provides services to a wide range of ages from children to adults

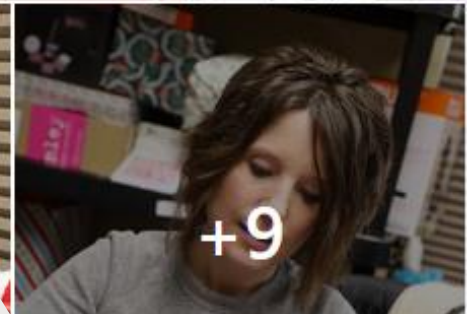
They operate with a small staff in a limited-space location, and serve the unique needs of families living with Autism Spectrum Disorder

Welcome to Northwest Autism Center's 4th annual Giving Tree

Giving gifts this holiday season to children and adults with developmental disabilities living in residential care homes

That's a wrap everyone!

Thank you to everyone that participated and donated to make gifts available to those in local care homes.



Our Impact and Our Ask



“We truly appreciate your encouragement and investment in Northwest Autism Center as we build a regional center of integrated services for those affected by autism.”

“Our expression of thanks will come in the form of improved independence, functioning, community integration, and quality of life for those living with autism and their families.”

~ **Dawn Sidell**, RN Executive Director
NW Autism Center